

SHOPPING

- 1 **Abigail's on Main** – 192 E Main Ave
- 2 **Alpaca by Design** – 140 W Cascade
- 3 **Baxter Auto Supply** – 303 SE Hood
- 4 **Beacham's Clock Company** – 300 W Hood
- 5 **Bedouin** – 143 E Hood
- 6 **Bi-Mart** – West Sisters inset
- 7 **Blazin' Saddles Cycle-N-Style** – 413 W Hood, Unit A
- 8 **Blue Alchemy** – 161 E Cascade
- 9 **Blue Burro Imports** – 164 N Elm
- 10 **Blue Orchid Photography** – 161 E Cascade
- 11 **Canyon Creek Pottery** – 310 N Cedar
- 12 **Clearwater Gallery** – 303 W Hood
- 13 **Cowgirls & Indians Resale** – 160 S Oak
- 14 **Culver House, The** – 351 W Cascade
- 15 **Drawstrings of Malibu** – 101 E Cascade
- 16 **Ear Expressions** – 221 W Cascade
- 17 **Eurosports** – 182 E Hood
- 18 **Flowers by Deanna** – 341 W Cascade
- 19 **Fly Fishers Place** – 151 W Main
- 20 **Gallimaufry, The** – 111 W Cascade Ave
- 21 **Hen's Tooth & White Rabbit** – 172 W Hood
- 22 **Hoyt's Hardware & Building Supply** – 440 NW Pine
- 23 **Les Schwab Tires (Taylor Tire Center)** – 600 W Hood
- 24 **Life-Love-Yoga, LLC** – 164 N Elm
- 25 **Little Britches Boutique** – 392 E Main
- 26 **Lonesome Water Books** – 221 W Cascade, Ste. C
- 27 **Lutton's Ace Hardware** – 373 E Hood
- 28 **MacKenzie Creek Mercantile** – 290 W Cascade
- 29 **Open Range** – 220 W Cascade
- 30 **Paper Place, The** – 142 W Hood
- 31 **Paulina Springs Books** – 252 W Hood
- 32 **Pony Express, The** – 222 W Hood
- 33 **Ray's Food Place** – West Sisters inset
- 34 **Richard's Produce** – 411 W Cascade
- 35 **Sisters Art Works** – 204 W Adams
- 36 **Sisters Folk Festival** – 204 W Adams
- 37 **Sisters Habitat ReStore** – 254 W Adams
- 38 **Sisters Habitat Thrift Store** – 141 W Main
- 39 **Sisters Log Furniture** – 121 W Cascade
- 40 **Sisters Log Furniture Outpost** – 200 W Cascade
- 41 **Sisters Olive & Nut** – 101 E Cascade
- 42 **Stitchin' Post & Twigs** – 311 W Cascade
- 43 **The Last Resort** – 170 W Cascade
- 44 **Village Interiors** – 382 E Hood
- 45 **Vista Bonita Glass Art Studio & Gallery** – 208 S Elm
- 46 **Your Store** – 216 W Cascade

RESTAURANTS/COFFEE SHOPS

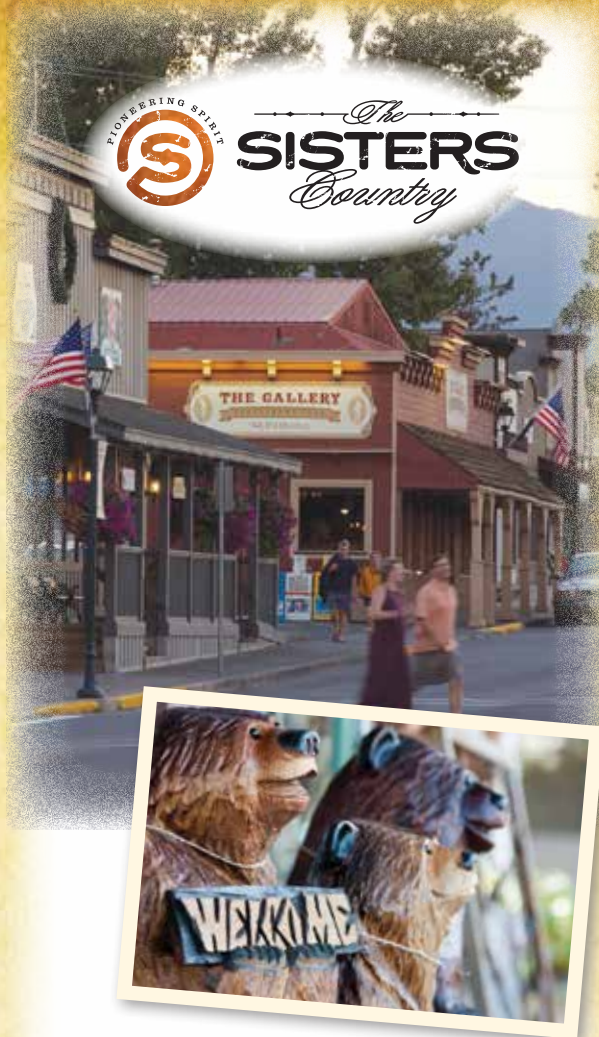
- 1 **Angeline's Bakery & Cafe** – 121 W Main
- 2 **Bright Spot Juice & Java** – 130 N Pine
- 3 **Bronco Billy's Ranch Grill** – 190 E Cascade
- 4 **Cork Cellars** – 160 S Fir (inside Melvin's)
- 5 **Depot Cafe** – 250 W Cascade
- 6 **Dutch Bros. of Central Oregon** – 442 E Hood
- 7 **El Rio** – FivePine Inset
- 8 **Gallery Restaurant, The** – 171 W Cascade
- 9 **Hardtails Bar & Grill** – 175 N Larch
- 10 **Hop N' Bean** – 523 E Hwy 20
- 11 **Jen's Garden** – 403 E Hood
- 12 **Los Agaves Mexican Grill** – 291 E Cascade Ave
- 13 **Martolli's Pizza** – 220 W Cascade
- 14 **McDonald's** – West Sisters inset
- 15 **Melvin's Fir Street Market** – 160 S Fir
- 16 **Navigator News** – 143 E Hood
- 17 **Rancho Viejo** – 150 E Cascade
- 18 **Sara's Coffee** – West Sisters inset
- 19 **Seasons Café & Wine Shop** – 411 E Hood
- 20 **Sisters Bakery** – 251 E Cascade
- 21 **Sisters Coffee Company** – 342 W Hood
- 22 **Sisters Market & Eatery** – 110 W Cascade
- 23 **Ski Inn** – 310 E Cascade
- 24 **Takoda's** – West Sisters inset
- 25 **The Open Door at Clearwater** – 303 W Hood
- 26 **The Porch** – 243 N Elm
- 27 **Three Creeks Brewing Company** – FivePine Inset

PERSONAL CARE SERVICES

- 1 **Elements Hair Studio** – 120 S Elm
- 2 **Essentials Skin Care** – 492 E Main
- 3 **Grace Nail Studio & Airbrush Tanning** – 473 W Hood, #101
- 4 **Metamorphosis Salon & Spa** – 161 N Elm
- 5 **Shibui Spa** – FivePine inset
- 6 **Simply White** – 110 S Elm

VISITOR SERVICES

- 1 **Bank of the Cascades** – 272 E Main
- 2 **Cathy's Cleaners** – 484 W Washington
- 3 **City of Sisters** – 520 E Cascade
- 4 **Sisters Area Chamber of Commerce** – 291 E Main
- 5 **Sisters Car Wash** – 130 N Pine
- 6 **Sisters Public Library** – 110 N Cedar
- 7 **Sisters-Camp Sherman RFPD** – 301 S Elm
- 8 **Sisters Outdoor Quilt Show Office** – 220 S Ash
- 9 **Sisters Post Office** – 694 N Larch
- 10 **Sisters Ranger District** – Pine & Hwy. 20
- 11 **Sisters Rodeo Assn. Office** – 220 S Cascade
- 12 **Washington Federal** – West Sisters inset
- 13 **U.S. Bank** – 123 W Hood



SHOPPING RESOURCE

The Sisters Country Shopping Resource is brought to you by the Sisters Area Chamber of Commerce and these fine businesses



541-549-1193
SistersHabitat.org



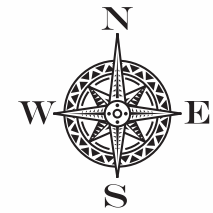
541-549-8191
SistersLogFurniture.com

Sisters Area Chamber of Commerce
291 East Main • 541-549-0251
www.SistersCountry.com



The SISTERS Country

Sisters Area Chamber of Commerce and Information Center



This map is produced by the Sisters Area Chamber of Commerce and supported in part by the Retail Cooperative Marketing Campaign. This map showcases members of the Sisters Area Chamber of Commerce as of May 2013.

Santiam Bicycle/
Pedestrian Path
(Approx 1/2 mi)

Whychus Creek
Bicycle/Pedestrian Path
(Approx 1/3 mi)

Whychus Creek
Bicycle/Pedestrian Path
(Approx 1/3 mi)